

SKYRIV®

THE RIVET JOINING SYSTEMS



SKYLOG SDN. BHD.

MALAYSIA | THAILAND | SINGAPORE | VIETNAM
INDONESIA | CHINA

www.skylog.com.my/industrial

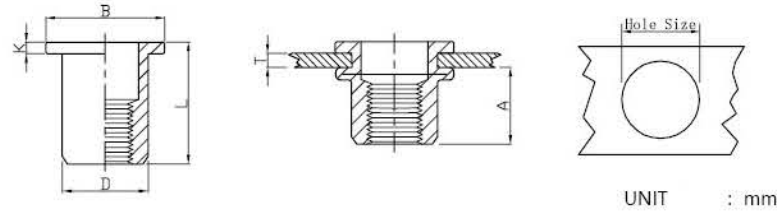
No 9-1, Jalan Sungai Burung Z32/Z,
Bukit Rimau, Seksyen 32,
40460 Shah Alam, Selangor,
Malaysia.

Tel : +603 5525 8299

Sales : +6016 9922 733

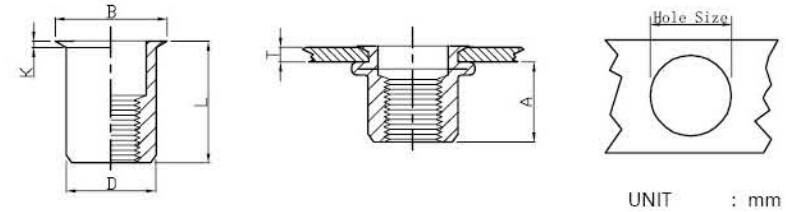
Email : cs@skylog.com.my

Flat Head Round Body Plain



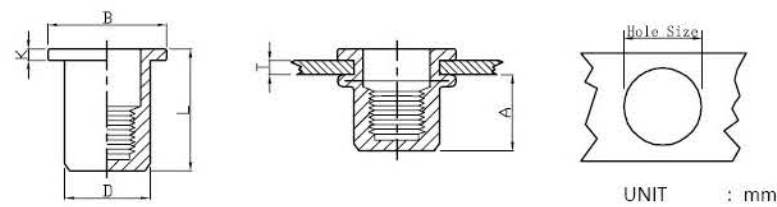
螺纹 Thread	编号 P/N	T(GRIP RANGE) Min Max	A Rer	Hole Size $+0.1$ 0	D $+0.07$ -0.1	B	K	L
M3	FH-RB-0315	0.5-1.5	4.7	5.0	4.9	7.2	0.8	8.5
	FH-RB-0325	1.5-2.5						9.5
M4	FH-RB-0420	0.5-2.0	6.0	6.0	5.9	8.5	0.8	10.5
	FH-RB-0435	2.0-3.5						12.0
M5	FH-RB-0525	0.5-2.5	7.5	7.0	6.9	10.0	1.0	13.0
	FH-RB-0550	2.5-5.0						17.0
M6	FH-RB-0630	0.5-3.0	9.2	9.0	8.9	12.3	1.3	15.5
	FH-RB-0655	3.0-5.5						18.0
M8	FH-RB-0835	0.5-3.5	11.5	11.0	10.9	15.0	1.5	18.5
	FH-RB-0860	3.5-6.0						21.0
M10	FH-RB-1025	0.5-2.5	11.5	13.0	12.9	16.3	1.5	17.0
M10	FH-RB-1040	2.5-4.0	12.5	13.0	12.9	17.0	1.6	21.0
	FH-RB-1060	4.0-6.0						24.0
M10	FH-RB-1035(12H)	1.0-3.5	11.0	12.0	11.9	16.0	1.6	19.0
M12	FH-RB-1240	1.0-4.0	13.5	15.0	14.9	18.0	1.7	22.0
	FH-RB-1265	4.0-6.5						25.0
M12	FH-RB-1240(16H)	1.0-4.0	16.0	16.0	15.9	22.0	2.0	25.0
M16	FH-RB-16	2.5-5.0	20.0	21.0	20.9	26.0	2.5	33.0

Reduce Head Round Body Plain



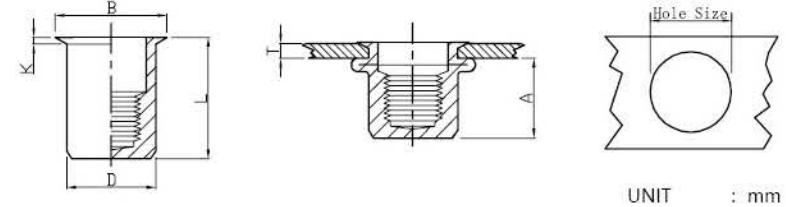
螺纹 Thread	编号 P/N	T(GRIP RANGE) Min Max	A Rer	Hole Size $+0.1$ 0	D $+0.07$ -0.1	B	K	L
M3	RH-RB-0315	0.5-1.5	6.2	5.0	4.9	6.0	0.5	9.0
M4	RH-RB-0420	0.5-2.0	6.5	6.0	5.9	7.0	0.5	10.5
	RH-RB-0440	2.0-4.0						13.0
M5	RH-RB-0520	0.5-2.0	7.0	7.0	6.9	8.0	0.5	11.5
	RH-RB-0540	2.0-4.0						13.0
M6	RH-RB-0625	0.5-2.5	8.5	9.0	8.9	10.5	0.6	14.0
	FH-RB-0650	2.5-5.0						17.0
M8	RH-RB-0830	0.5-3.0	10.0	11.0	10.9	12.0	0.65	16.5
	FH-RB-0850	3.0-5.0						18.5
M10	RH-RB-1030	0.5-3.0	13.0	13.0	12.9	14.1	0.7	17.7
	RH-RB-1055	3.0-5.5						21.0
M10	RH-RB-1030(12H)	0.5-3.0	12.5	12.0	11.9	13.0	0.7	18.0

Flat Head Round Body Plain Closed End



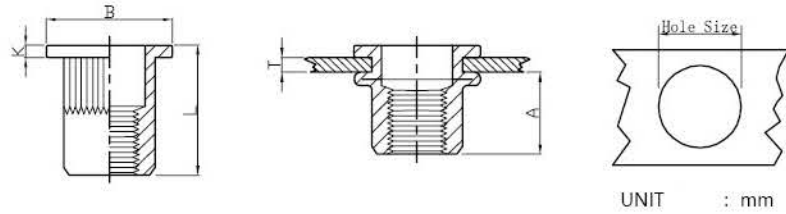
螺纹 Thread	编号 P/N	T(GRIP RANGE) Min Max	A Rer	Hole Size $+0.1$ 0	D $+0.07$ -0.1	B	K	L
M3	FH-RBC-0315	0.5-1.5	10.0	5.0	4.9	7.2	0.8	13.3
M4	FH-RBC-0420	0.5-2.0	11.3	6.0	5.9	9.0	0.8	16.0
	FH-RBC-0440	2.0-4.0						18.0
M5	FH-RBC-0525	0.5-2.5	11.5	7.0	6.9	10.0	1.0	17.0
	FH-RBC-0550	2.5-5.0						19.0
M6	FH-RBC-0630	0.5-3.0	12.7	9.0	8.9	12.3	1.3	19.2
	FH-RBC-0650	3.0-5.5						21.0
M8	FH-RBC-0830	0.5-3.0	14.8	11.0	10.9	15.0	1.5	21.5
	FH-RBC-0855	3.5-5.5						24.0
M10	FH-RBC-1040	1.0-4.0	19.2	13.0	12.9	17.0	1.6	27.0

Reduce Head Round Body Plain Closed End



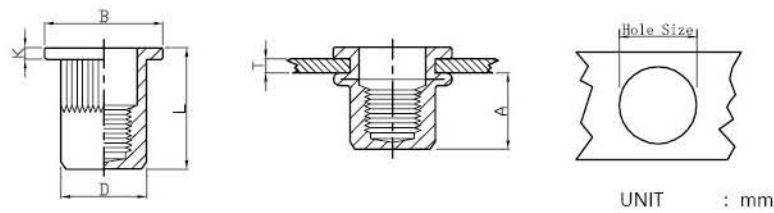
螺纹 Thread	编号 P/N	T(GRIP RANGE) Min Max	A Rer	Hole Size $+0.1$ 0	D $+0.07$ -0.1	B	K	L
M4	RH-RBC-0420	0.5-2.0	11.0	6.0	5.9	7.0	0.5	15.0
	RH-RBC-0435	2.0-3.5						16.0
M5	RH-RBC-0520	0.5-2.0	12.5	7.0	6.9	8.0	0.5	16.5
	RH-RBC-0535	2.0-3.5						17.5
M6	RH-RBC-0625	0.5-2.5	15.5	9.0	8.9	10.0	0.6	20.5
	RH-RBC-0640	2.5-4.0						22.0
M8	RH-RBC-0830	0.5-3.0	17.0	11.0	10.9	12.0	0.65	23.0
	RH-RBC-0845	2.5-4.5						24.5
M10	RH-RBC-1030	1.0-3.0	18.2	13.0	12.9	14.1	0.7	24.5
	RH-RBC-1050	3.0-5.0						26.0

Flat Head Knurled Body



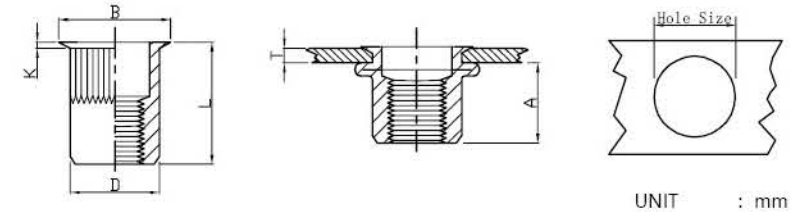
螺纹 Thread	编号 P/N	T(GRIP RANGE)		A Rer	Hole Size $+0.1$ 0	D $+0.07$ -0.1	B	K	L
		Min	Max						
M3	FH-KB-0315	0.5-1.5		6.0	5.0	4.9	8.0	0.8	10.0
	FH-KB-0325	2.0-3.5							11.5
M4	FH-KB-0420	0.5-2.0		6.0	6.0	5.9	9.0	0.8	10.5
	FH-KB-0435	2.0-3.5							12.0
M5	FH-KB-0525	0.5-2.5		7.5	7.0	6.9	10.0	1.0	13.0
	FH-KB-0550	2.5-5.0		8.5					16.5
M6	FH-KB-0630	0.5-3.0		9.2	9.0	8.9	12.3(*13.0)	1.3	15.0(15.5)
	FH-KB-0655	3.0-5.5		10.5					19.5
M8	FH-KB-0835	1.0-3.5		11.5	11.0	10.9	14.5(*16.0)	1.5	18.5
	FH-KB-0860	3.5-6.0							21.0
M10	FH-KB-1040	1.0-4.0		13.5	13.0	12.9	17.0 (*19.0)	1.7	21.5
	FH-KB-1065	4.0-6.5							24.0
M10	FH-KB-1035(12H)	1.0-3.5		11.0	12.0	11.9	16.0	1.6	19.0
	FH-KB-1060(12H)	3.5-5.5							24.0
M12	FH-KB-1240	1.0-4.0		13.5	15.0	14.9	18.0	1.7	22.0
	FH-KB-1265	4.0-6.5		14.0					25.0
M12	FH-KB-1240(16H)	1.0-4.0		15.0	16.0	15.9	22.0	2.0	25.0
	FH-KB-1260(16H)	3.5-6.0		16.0					28.0

Flat Head Knurled Body Closed End



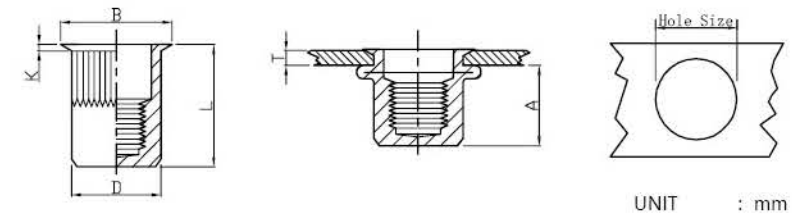
螺纹 Thread	编号 P/N	T(GRIP RANGE)		A Rer	Hole Size $+0.1$ 0	D $+0.07$ -0.1	B	K	L
		Min	Max						
M4	FH-KBC-0420	0.5-2.0		11.3	6.0	5.9	9.0	0.8	16.0
	FH-KBC-0440	2.0-4.0							18.0
M5	FH-KBC-0530	0.5-3.0		11.5	7.0	6.9	10.0	1.0	17.0
	FH-KBC-0550	2.5-5.0							19.0
M6	FH-KBC-0630	0.5-3.0		12.7	9.0	8.9	12.3	1.3	19.2
	FH-KBC-0650	3.0-5.0							21.0
M8	FH-KBC-0830	0.5-3.0		14.8	11.0	10.9	15.0	1.5	21.5
	FH-KBC-0855	3.0-5.5							24.0
M10	FH-KBC-1040	1.0-4.0		19.2	13.0	12.9	17.0	1.6	27.0
	FH-KBC-1060	3.5-6.0							22.0

Reduce Head Knurled Body



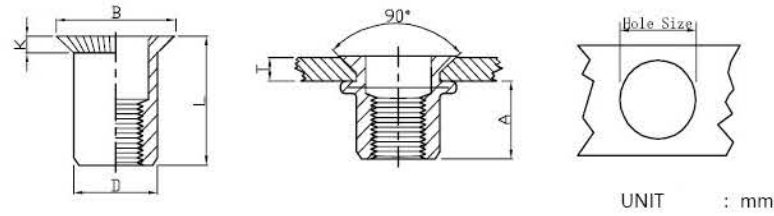
螺纹 Thread	编号 P/N	T(GRIP RANGE)		A Rer	Hole Size $+0.1$ 0	D $+0.07$ -0.1	B	K	L
		Min	Max						
M3	RH-KB-0320	0.5-2.0		6.2	5.0	4.9	6.0	0.5	9.0
	RH-KB-0335	1.5-3.0							11.5
M4	RH-KB-0420	0.5-2.0		7.0	6.0	5.9	7.0	0.5	11.2
	RH-KB-0440	2.0-4.0							13.0
M5	RH-RB-0520	0.5-2.0		7.0	7.0	6.9	8.0	0.5	11.5
	RH-KB-0540	2.0-4.0							13.0
M6	RH-KB-0625	0.5-2.5		8.5	9.0	8.9	10.0(10.4)	0.6	14.0
	RH-KB-0650	2.5-5.0							16.0
M8	RH-KB-0830	0.5-3.0		10.0	11.0	10.9	12.0(12.4)	0.65	16.5
	RH-KB-0850	3.0-5.0							18.5
M10	RH-KB-1035	1.0-3.5		12.5	13.0	12.9	14.0	0.7	19.5
	RH-KB-1060	3.5-6.0							22.0
M10	RH-KB-1035(12H)	1.0-3.5		12.5	12.0	11.9	13.0	0.7	19.5
	RH-KB-1060(12H)	3.5-5.5							22.0
M12	RH-KB-1240	1.0-4.0		16.2	16.0	15.9	17.6	0.75 0.8	24.2
	RH-KB-1260	4.0-6.5							27.5
M12	RH-KB-1235	0.5-3.5		15.2	15.0	14.9	16.5	0.8	22.5

Reduce Head Knurled Body Closed End



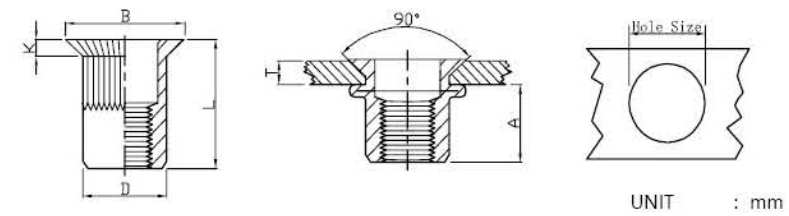
螺纹 Thread	编号 P/N	T(GRIP RANGE)		A Rer	Hole Size $+0.1$ 0	D $+0.07$ -0.1	B	K	L
		Min	Max						
M4	RH-KBC-0420	0.5-2.0		11.0	6.0	5.9	7.0	0.5	15.0
	RH-KBC-0435	2.0-3.5							16.5
M5	RH-KBC-0520	0.5-2.0		12.5	7.0	6.9	8.0	0.5	16.5
	RH-KBC-0535	2.0-3.5							18.0
M6	RH-KBC-0630	0.5-3.0		15.5	9.0	8.9	10.0	0.6	20.5
	RH-KBC-0645	3.0-4.5							22.0
M8	RH-KBC-0830	0.5-3.0		17.0	11.0	10.9	12.0	0.65	23.0
	RH-KBC-0845	3.0-4.5							24.5
M10	RH-KBC-1030	1.0-3.0		18.2	13.0	12.9	14.0	0.7	24.5
	RH-KBC-1050	3.0-5.0							26.0
M12	RH-KBC-1240	1.0-4.0		20.0	16.0	15.9	17.6	0.8	29.0
	RH-RBC-1260	3.0-6.0							32.0

Countersunk Head Round Body Plain



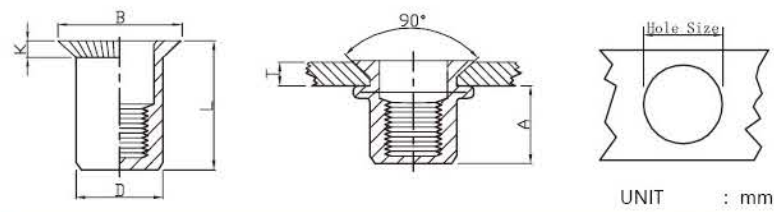
螺纹 Thread	编号 P/N	T(GRIP RANGE) Min Max	A Rer	Hole Size $^{+0.1}_0$	D $^{+0.07}_{-0.1}$	B	K	L
M3	CH-RB-0335	1.6-3.5	4.5	5.0	4.9	7.8	1.5	8.5
M4	CH-RB-0430	1.5-3.0	6.5	6.0	5.9	9.0	1.5	12.0
M5	CH-RB-0535	1.5-3.5	7.5	7.0	6.9	10.0	1.5	13.0
M6	CH-RB-0640	1.5-4.0	9.0	9.0	8.9	12.0	1.5	15.5
M8	CH-RB-0845	2.0-4.5	11.0	11.0	10.9	14.0	1.5	18.5
M10	CH-RB-1050(12H)	1.6-5.0	11.5	12.0	11.9	15.0	1.5	21.0
	CH-RB-1050	2.0-5.0	13.0	13.0	12.9	16.0	1.5	21.0
M12	CH-RB-1245	1.6-4.5	17.5	16.0	15.9	19.0	1.9	26.0
	CH-RB-1260	4.5-6.5	17.5	16.0	15.9	19.0	1.9	28.0

Countersunk Head Knurled Body



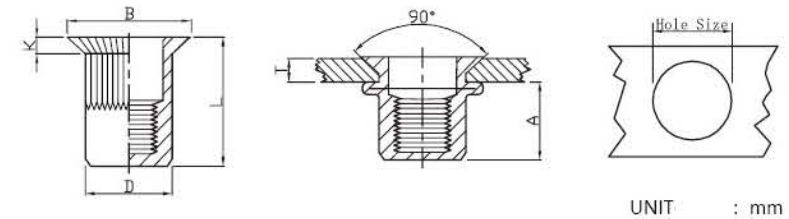
螺纹 Thread	编号 P/N	T(GRIP RANGE) Min Max	A Rer	Hole Size $^{+0.1}_0$	D $^{+0.07}_{-0.1}$	B	K	L
M3	CH-KB-0325	1.5-2.5	4.5	5.0	4.9	7.5	1.5	8.5
	CH-KB-0340	2.5-4.0	4.5	5.0	4.9	7.5	1.5	10.5
M4	CH-KB-0430	1.5-3.0	6.5	6.0	5.9	9.0	1.5	12.0
	CH-KB-0450	3.5-5.0	6.5	6.0	5.9	9.0	1.5	13.0
M5	CH-RB-0535	1.5-3.5	7.5	7.0	6.9	10.0	1.5	13.0
	CH-KB-0550	3.0-5.0	7.5	7.0	6.9	10.0	1.5	15.0
M6	CH-KB-0640	1.5-4.0	9.0	9.0	8.9	12.0	1.5	15.5
	CH-KB-0660	4.0-6.0	9.0	9.0	8.9	12.0	1.5	17.0
M8	CH-KB-0845	2.0-4.5	11.0	11.0	10.9	14.0	1.5	18.5
	CH-KB-0860	4.5-6.0	11.0	11.0	10.9	14.0	1.5	19.0
M10	CH-KB-1050	2.0-5.0	13.0	13.0	12.9	16.0	1.5	21.0
	CH-KB-1065	3.5-6.5	13.0	13.0	12.9	16.0	1.5	24.0
M10	CH-KB-1050(12H)	1.6-5.0	11.5	12.0	11.9	15.0	1.5	19.0
	CH-KB-1065(12H)	4.0-7.5	11.5	12.0	11.9	15.0	1.5	24.0
M12	CH-KB-1250(16H)	2.0-5.0	16.5	16.0	15.9	19.0	1.9	24.0
	CH-KB-1270(16H)	5.0-7.0	16.5	16.0	15.9	19.0	1.9	24.0

Countersunk Head Round Body Plain Closed End



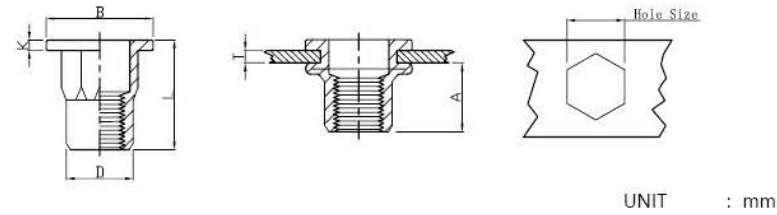
螺纹 Thread	编号 P/N	T(GRIP RANGE) Min Max	A Rer	Hole Size $^{+0.1}_0$	D $^{+0.07}_{-0.1}$	B	K	L
M4	CH-RBC-0430	1.5-3.0	12.3	6.0	5.9	9.0	1.5	17.5
M5	CH-RBC-0535	1.5-3.5	14.0	7.0	6.9	10.0	1.5	19.5
M6	CH-RBC-0640	1.5-4.0	17.5	9.0	8.9	12.0	1.5	23.5
M8	CH-RBC-0840	1.5-4.0	20.0	11.0	10.9	14.0	1.5	26.5
M10	CH-RBC-1045	1.5-5.0	21.5	13.0	12.9	16.0	1.5	30.0

Countersunk Head Knurled Body Closed End



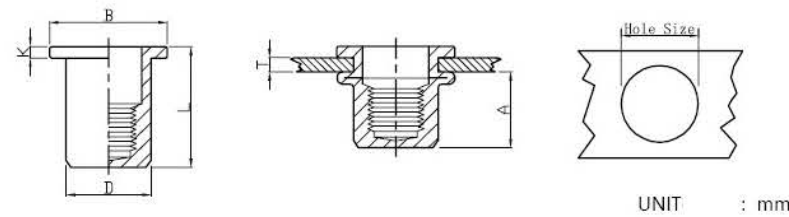
螺纹 Thread	编号 P/N	T(GRIP RANGE) Min Max	A Rer	Hole Size $^{+0.1}_0$	D $^{+0.07}_{-0.1}$	B	K	L
M3	CH-KBC-0325	1.5-2.5	10.3	5.0	4.9	7.5	1.5	15.5
	CH-KBC-0340	2.5-4.0	10.3	5.0	4.9	7.5	1.5	17.5
M4	CH-KBC-0430	1.5-3.0	12.3	6.0	5.9	9.0	1.5	17.5
	CH-KBC-0450	3.0-5.0	12.3	6.0	5.9	9.0	1.5	19.5
M5	CH-KBC-0535	1.5-3.5	14.0	7.0	6.9	10.0	1.5	19.5
	CH-KBC-0550	3.5-5.0	14.0	7.0	6.9	10.0	1.5	23.5
M6	CH-KBC-0640	1.5-4.0	17.5	9.0	8.9	12.0	1.5	23.5
	CH-KBC-0660	4.0-6.0	17.5	9.0	8.9	12.0	1.5	25.5
M8	CH-KBC-0845	1.5-4.5	20.0	11.0	10.9	14.0	1.5	26.5
	CH-KBC-0860	4.5-6.0	20.0	11.0	10.9	14.0	1.5	29.5
M10	CH-KBC-1050	1.5-5.0	21.5	13.0	12.9	16.0	1.5	30.0
	CH-KBC-1065	4.5-6.5	21.5	13.0	12.9	16.0	1.5	32.5
M12	CH-KBC-1255	1.5-5.5	22.5	16.0	15.9	19.0	1.5	33.0
	CH-KBC-1270	5.5-7.0	22.5	16.0	15.9	19.0	1.5	35.0

Flat Head Semi-Hex Body



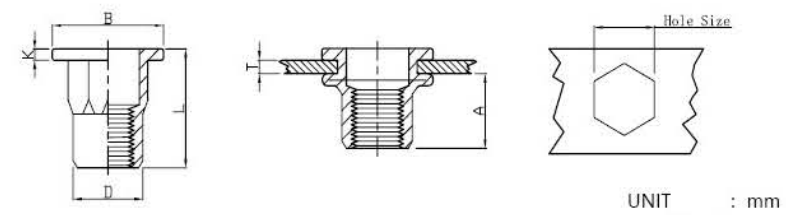
螺纹 Thread	编号 P/N	T(GRIP RANGE) Min Max	A Rer	Hole Size $+0.1$ 0	D $+0.07$ -0.1	B	K	L
M3	FH-SHB-0325	0.5-1.8	5.5	5.0	4.9	8.0	0.75	9.0
M4	FH-SHB-0420 FH-SHB-0440	0.5-2.0 2.0-4.0	7.0	6.0	5.9	9.0	0.8	11.0 13.0
M5	FH-SHB-0525 FH-SHB-0540	0.5-2.5 2.5-4.0	7.5	7.0	6.9	10.0	1.0	13.0 14.0
M6	FH-SHB-0630 FH-SHB-0650	0.5-3.0 3.0-5.0	9.2	9.0	8.9	12.7(*13.0)	1.35	15.0(15.5) 19.5
M8	FH-SHB-0835 FH-SHB-0855	1.0-3.5 3.5-5.5	11.2	11.0	10.9	16.0	1.5	18.0 21.0
M10	FH-SHB-1035 FH-SHB-1060	1.0-3.5 3.5-6.0	12.5 12.8	13.0	12.9	18.0 18.0(*19.0)	1.7	21.0 21.0
M10	FH-SHB-1035(12H)	1.0-3.5	11.0	12.0	11.9	17.0	1.6	19.0
M12	FH-SHB-1250(16H)	2.0-5.0	16.5	16.0	15.9	23.0	2.0	27.5

Elevator Nut



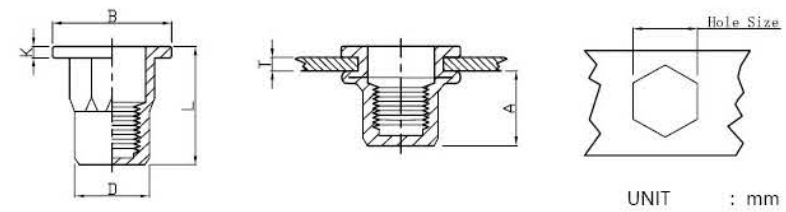
螺纹 Thread	编号 P/N	T(GRIP RANGE) Min Max	A Rer	Hole Size $+0.1$ 0	D $+0.07$ -0.1	B	K	L
M6	FHRB-TT-0630	1.0-3.0	10	9.0	8.9	12.0	5.0	18.0
M8	FHRB-TT-0835	1.0-3.5	11.5	11.0	10.9	14.0	6.0	21.5
M10	FHRB-TT-1040	1.0-4.0	12.5	14.3	14.2	18.0	6.0	22.5

Flat Head Inner-Hex Body



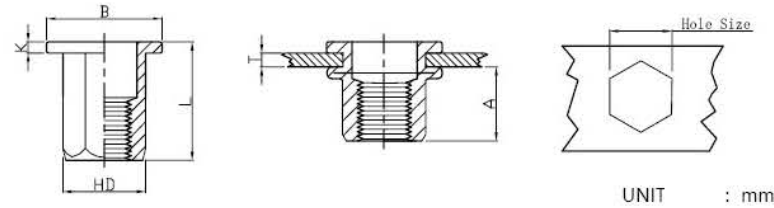
螺纹 Thread	编号 P/N	T(GRIP RANGE) Min Max	A Rer	Hole Size $+0.1$ 0	D $+0.07$ -0.1	B	K	L
M3	FH-IHB-0325	0.5-1.8	5.5	5.0	4.9	8.0	0.75	9.0
M4	FH-IHB-0420 FH-IHB-0440	0.5-2.0 2.0-4.0	7.0	6.0	5.9	9.0	0.8	11.0 13.0
M5	FH-IHB-0525 FH-IHB-0540	0.5-2.5 2.5-4.0	7.5	7.0	6.9	10.0	1.0	12.0 14.0
M6	FH-IHB-0630 FH-IHB-0650	0.5-3.0 3.0-5.0	9.2	9.0	8.9	12.7(*13.0)	1.35	15.5 19.5
M8	FH-IHB-0835 FH-IHB-0855	1.0-3.5 3.5-5.5	11.2	11.0	10.9	16.0	1.5	18.0 21.0
M10	FH-IHB-1035(13H) FH-IHB-1060(13H)	1.0-3.5 3.5-6.0	12.8	13.0	12.9	18.0(*19.0)	1.7	21.0 21.0
M12	FH-IHB-1250(16H)	2.0-5.0	16.5	16.0	15.9	23.0	2.0	27.5

Flat Head Inner-Hex Body Closed End



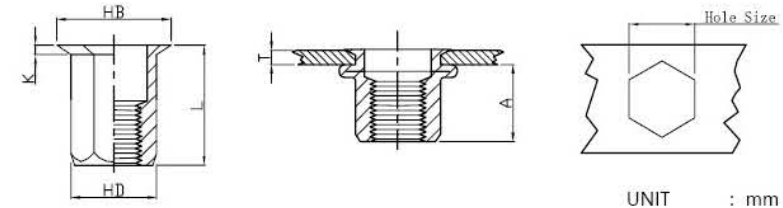
螺纹 Thread	编号 P/N	T(GRIP RANGE) Min Max	A Rer	Hole Size $+0.1$ 0	D $+0.07$ -0.1	B	K	L
M4	FH-IHBC-0420 FH-IHBC-0440	0.5-2.0 2.0-4.0	11.5	6.0	5.9	9.0	0.8	16.0 17.0
M5	FH-IHBC-0525 FH-IHBC-0545	0.5-2.5 2.5-4.5	13.5	7.0	6.9	10.0	1.0	18.5 19.5
M6	FH-IHBC-0635 FH-IHBC-0655	0.5-3.0 3.0-5.5	17.0	9.0	8.9	12.7	1.35	23.0 25.0
M8	FH-IHBC-0835 FH-IHBC-0860	1.0-3.5 3.5-6.0	18.2	11.0	10.9	16.0	1.5	25.0 27.0
M10	FH-IHBC-1040 FH-IHBC-1060	1.0-4.0 4.0-6.0	25.0	13.0	12.9	18.0(*19.0)	1.7	33.0 35.0
M12	FH-IHBC-1265 FH-IHBC-1285	4.0-6.5 6.5-8.5	27.0	16.0	15.9	23.0	2.0	34.0 37.0

Flat Head Full Hex Body



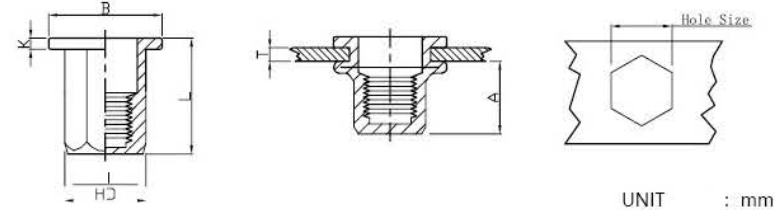
螺纹 Thread	编号 P/N	T(GRIP RANGE) Min Max	A Rer	Hole Size $+0.1$ 0	D $+0.07$ -0.1	B	K	L
M3	FH-FHB-0325	0.5-1.5	5.5	5.0	4.9	7.5	0.8	8.5
M4	FH-FHB-0420 FH-FHB-0440	0.5-2.0 2.0-4.0	6.5	6.0	5.9	9.0	0.8	11.0 13.0
M5	FH-FHB-0525 FH-FHB-0540	0.5-2.5 2.5-5.0	8.0	7.0	6.9	10.0	1.0	14.0 16.5
M6	FH-FHB-0630 FH-FHB-0650	0.5-3.0 3.0-5.5	8.5	9.0	8.9	12.7(*13.0)	1.35	15.0(*16.0) 19.5
M8	FH-FHB-0835 FH-FHB-0855	1.0-3.5 3.5-5.5	10.5	11.0	10.9	16.0	1.5	18.0 21.0
M10	FH-FHB-1035 FH-FHB-1060	1.0-3.5 3.5-6.0	12.5	13.0	12.9	18.0(*19.0) 19.0	1.7	21.0(*23.0) 24.0
M10	FH-FHB-1035(12H) FH-FHB-1040(12H)	1.0-3.5 3.5-6.0	13.5	12.0	11.9	18.0	1.7	21.0 22.5
M12	FH-FHB-1240(15H)	1.0-4.0	14.0	15.0	14.9	20.0	1.7	23.0
M12	FH-FHB-1250(16H) FH-FHB-1280(16H)	2.0-5.0 5.0-8.0	16.5	16.0	15.9	23.0	2.0	27.0 30.0

Reduce Hex Head Full-Hex Body



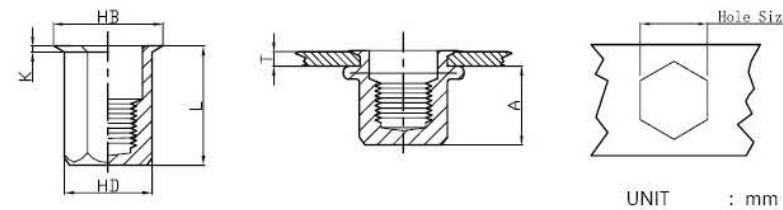
螺纹 Thread	编号 P/N	T(GRIP RANGE) Min Max	A Rer	Hole Size $+0.1$ 0	D $+0.07$ -0.1	B	K	L
M3	RHH-FHB-0325 RHH-FHB-0340	0.5-1.5 1.5-3.0	5.0	5.0	4.9	6.0	0.5	8.5 10.5
M4	RHH-FHB-0425 RHH-FHB-0450	0.5-2.5 2.5-5.0	6.7	6.0	5.9	7.0	0.5	11.0 13.5
M5	RHH-FHB-0530 RHH-FHB-0550	0.5-3.0 3.0-5.0	9.0	7.0	6.9	8.0	0.5	14.5 16.0
M6	RHH-FHB-0635 RHH-FHB-0660	1.0-3.5 3.5-6.0	10.0	9.0	8.9	10.0	0.6	16.0 18.0
M8	RHH-FHB-0840 RHH-FHB-0860	1.0-4.0 4.0-6.0	11.5	11.0	10.9	12.0	0.65	18.0 20.0
M10	RHH-FHB-1035(12H) RHH-FHB-1060(12H)	1.0-3.5 3.5-6.0	12.5 14.5	12.0	11.9	13.5	0.75	20.0 23.5
M10	RHH-FHB-1035 RHH-FHB-1060	1.0-3.5 3.5-6.0	12.5 14.5	13.0	12.9	14.5	0.75	19.0 23.5
M12	RHH-FHB-1240 RHH-FHB-1260	1.0-4.0 4.0-7.0	15.5	16.0	15.9	17.5	1.1	25.0 28.0
M12	RHH-FHB-1240(15H)	1.0-4.0	15.5	15.0	14.9	17.5	1.1	22.5

Flat Head Full Hex Body Closed End



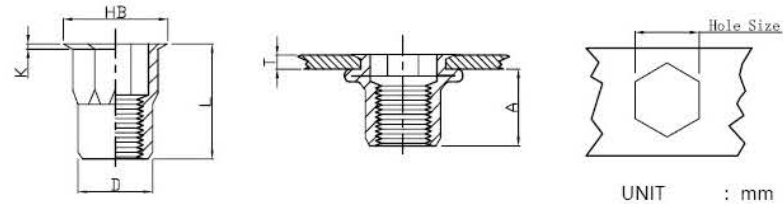
螺纹 Thread	编号 P/N	T(GRIP RANGE) Min Max	A Rer	Hole Size $+0.1$ 0	D $+0.07$ -0.1	B	K	L
M4	FH-FHBC-0420 FH-FHBC-0440	0.5-2.0 2.0-4.0	11.0	6.0	5.9	9.0	1.0	15.0 17.0
M5	FH-FHBC-0525 FH-FHBC-0540	0.5-2.5 2.5-5.0	13.5	7.0	6.9	10.0	1.0	18.0 20.0
M6	FH-FHBC-0630 FH-FHBC-0650	0.5-3.0 3.0-5.5	17.0	9.0	8.9	12.7	1.5	23.0 25.0
M8	FH-FHBC-0835 FH-FHBC-0855	1.0-3.5 3.5-5.5	19.0	11.0	10.9	16.0	1.5	26.0 29.0
M10	FH-FHBC-1040 FH-FHBC-1060	1.0-4.0 4.0-6.0	25.0	13.0	12.9	19.0	2.0 1.8	33.0 35.0

Reduce Hex Head Full-Hex Body Closed End



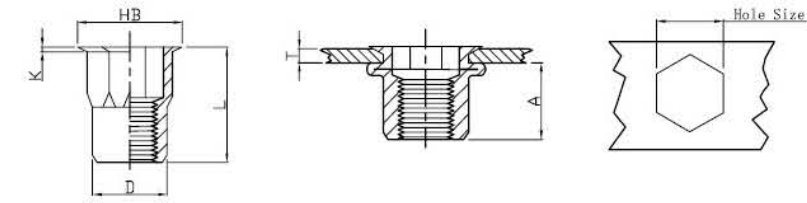
螺纹 Thread	编号 P/N	T(GRIP RANGE) Min Max	A Rer	Hole Size $+0.1$ 0	D $+0.07$ -0.1	B	K	L
M4	RH-FHBC-0425 RH-FHBC-0450	0.5-2.5 2.5-4.0	12.3	6.0	5.9	7.0	0.5	16.0 18.0
M5	RH-FHBC-0530 RH-FHBC-0550	0.5-3.0 3.0-5.0	15.2	7.0	6.9	8.0	0.5	20.0 23.0
M6	RH-FHBC-0635 RH-FHBC-0660	0.5-3.5 3.5-5.5	14.5	9.0	8.9	10.0	0.6	20.5 23.5
M8	RH-FHBC-0840 RH-FHBC-0860	1.0-4.0 4.0-6.0	17.0	11.0	10.9	12.0	0.65	23.0 25.0
M10	RH-FHBC-1045 RH-FHBC-1060	1.0-4.5 4.0-6.0	20.0	13.0	12.9	14.5	0.75 0.8	28.5 30.5

Reduce Hex Head Inner-Hex Body



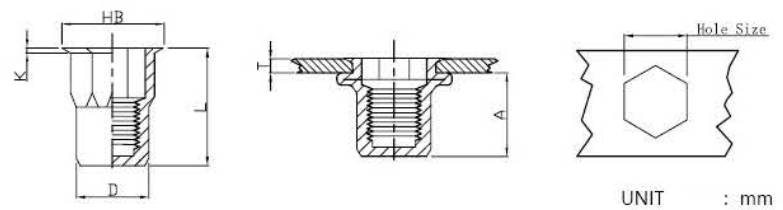
螺纹 Thread	编号 P/N	T(GRIP RANGE) Min Max	A Rer	Hole Size $+0.1$ 0	D $+0.07$ -0.1	B	K	L
M3	RHH-IHB-0325	0.5-1.5	5.5	5.0	4.9	6.0	0.5	8.5
	RHH-IHB-0340	1.5-2.5						10.5
M4	RHH-IHB-0420	0.5-2.0	8.3	6.0	5.9	7.0	0.5	12.0
	RHH-IHB-0440	2.0-4.0						14.0
M5	RHH-IHB-0525	0.5-2.5	8.7	7.0	6.9	8.0	0.5	13.0
	RHH-IHB-0540	2.5-4.5						15.0
M6	RHH-IHB-0635	1.0-3.5	10.5	9.0	8.9	10.0	0.6	16.0
	RHH-IHB-0650	3.5-5.0						18.0
M8	RHH-IHB-0835	1.0-3.5	11.3	11.0	10.9	12.0	0.65	17.5
	RHH-IHB-0850	3.5-6.0						20.0
M10	RHH-IHB-1040	1.0-4.0	12.8	13.0	12.9	14.5	0.75	21.0
	RHH-IHB-1050	4.0-6.0						23.0
M10	RHH-IHB-1040(12H)	1.0-4.0	11.3	12.0	11.9	13.5	0.7	19.5
M12	RHH-IHB-1240	1.0-4.0	14.8	16.0	15.9	17.5	1.0	24.2
	RHH-IHB-1260	4.0-7.0						28.0

Reduce Hex Head Inner-Hex Body-UK



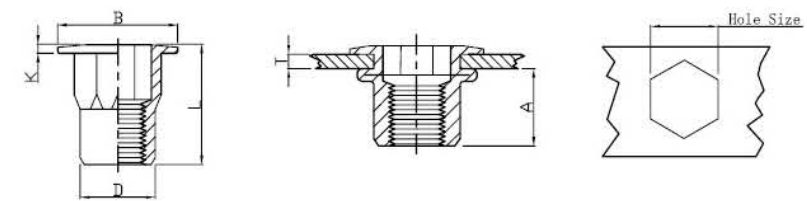
螺纹 Thread	编号 P/N	T(GRIP RANGE) Min Max	A Rer	Hole Size $+0.1$ 0	D ± 0.05 (* ± 0.08)	B	K	L
M4	RHH-IHB-UK-0420	0.5-2.0	6.5	6.4	6.25	7.25	0.5	10.5
M5	RHH-IHB-UK-0525	0.5-2.5	7.5	7.2	7.05	8.1	0.5	12.0*
M6	RHH-IHB-UK-0630	1.0-3.0	9.2	9.6	9.45	10.5*	0.6*	15.0*
M8	RHH-IHB-UK-0835	1.0-3.5	10.5	10.6	10.45	11.5*	0.65*	16.5*
M10	RHH-IHB-UK-1040	1.0-4.0	11.3	12.8	12.65	14.0	0.7	21.0

Reduce Hex Head Inner-Hex Body Closed End



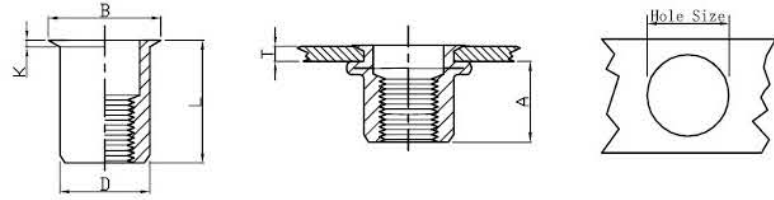
螺纹 Thread	编号 P/N	T(GRIP RANGE) Min Max	A Rer	Hole Size $+0.1$ 0	D $+0.07$ -0.1	B	K	L
M4	RHH-IHBC-0420	0.5-2.0	11.5	6.0	5.9	7.0	0.6	15.5
	RHH-IHBC-0440	2.0-4.0						18.0
M5	RHH-IHBC-0525	0.5-2.5	13.5	7.0	6.9	8.0	0.6	18.0
	RHH-IHBC-0545	2.5-4.5						23.0
M6	RHH-IHBC-0635	1.0-3.5	15.8	9.0	8.9	10.0	0.6	21.5
	RHH-IHBC-0650	3.0-5.0						23.5
M8	RHH-IHBC-0835	1.0-3.5	18.2	11.0	10.9	12.0	0.7	24.0
	RHH-IHBC-0855	3.5-5.5						25.0
M10	RHH-IHBC-1040	1.0-4.0	23.2	13.0	12.9	14.5	0.85	30.5
	RHH-IHBC-1060	4.0-6.0						30.5
M12	RHH-IHBC-1265	4.0-6.5	22.5	16.0	15.9	17.5	1.0	32.5
	RHH-IHBC-1285	6.5-8.5						35.0

Flat Head Inner-Hex Body-UK



螺纹 Thread	编号 P/N	T(GRIP RANGE) Min Max	A Rer	Hole Size $+0.1$ 0	D ± 0.05 (* ± 0.08)	B	K	L
M4	FH-IHB-UK-0420	0.5-2.0	6.5	6.4	6.25	9.5	0.6	10.5
M5	FH-IHB-UK-0525	0.5-2.5	7.5	7.2	7.05	10.0	0.8	12.0
M6	FH-IHB-UK-0630	1.0-3.0	9.2	9.6	9.4*	12.95*	1.0*	15.5*
M8	FH-IHB-UK-0835	1.0-3.5	10.5	10.6	10.45*	16.5*	1.15*	18.5*
M10	FH-IHB-UK-1040	1.0-4.0	12.3	12.8	12.65	17.0	1.2	20.5

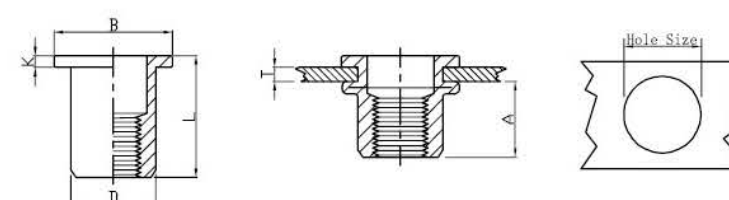
Reduce Head Round Body Plain-UK



UNIT : mm

螺纹 Thread	编号 P/N	T(GRIP RANGE)		A Rer	Hole Size $+0.1$ 0	D ± 0.05 (* $+0.07$ -0.1)	B	K	L
		Min	Max						
M3	RH-RB-UK-0315	0.5	1.5	5.5	4.8	4.65	5.4	0.4	9.0
M4	RH-RB-UK-0420	0.5	2.0	6.5	6.4	6.25	7.0	0.5	10.5
M5	RH-RB-UK-0525	0.5	2.5	7.5	7.2	7.05	7.8	0.5	12.0
M6	RH-RB-UK-0630	1.0	3.0	9.2	9.6	9.45	10.3	0.6	15.0
M8	RH-RB-UK-0835	1.0	3.5	10.5	10.6	10.45	11.3	0.6	16.0
M10	RH-RB-UK-1040	1.0	4.0	12.8	12.8	12.65*	13.8	0.65	20.0

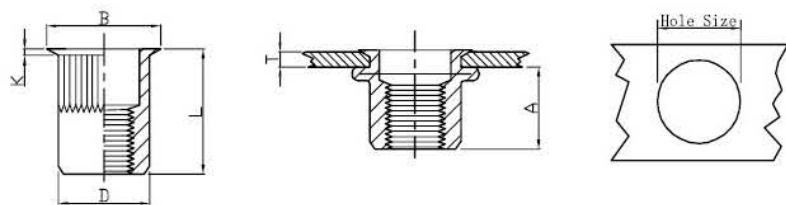
Stainless Steel Flat Head Round Body Plain



UNIT : mm

螺纹 Thread	编号 P/N	T(GRIP RANGE)		A Rer	Hole Size $+0.1$ 0	D $+0.07$ -0.1	B	K	L
		Min	Max						
M4	FH-RB/SS-0420	0.5	2.0	6.0	6.0	5.9	8.5	0.8	10.5
M5	FH-RB/SS-0525	0.5	2.5	7.5	7.0	6.9	10.0	1.0	13.0
M6	FH-RB/SS-0630	0.5	3.0	9.2	9.0	8.9	12.3	1.3	15.5
M8	FH-RB/SS-0835	1.0	3.5	11.5	11.0	10.9	15.0	1.5	18.5
M10	FH-RB/SS-1040	1.0	4.0	12.5	13.0	12.9	17.0	1.6	21.0

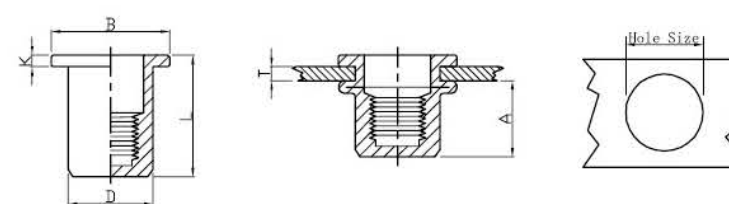
Reduce Head Knurled Body-UK



UNIT : mm

螺纹 Thread	编号 P/N	T(GRIP RANGE)		A Rer	Hole Size $+0.1$ 0	D ± 0.05 (* $+0.07$ -0.1)	B	K	L
		Min	Max						
M3	RH-KB-UK-0315	0.5	1.5	5.5	4.8	4.65	5.4	0.4	9.0
M4	RH-KB-UK-0420	0.5	2.0	6.5	6.5	6.35	7.0 (7.45)	0.5	10.5
M5	RH-KB-UK-0525	0.5	2.5	7.5	7.25	7.15	7.85(8.25)	0.5	12.0
M6	RH-KB-UK-0630	1.0	3.0	9.2	9.6	9.45	10.3(10.8)	0.6	15.0
M8	RH-KB-UK-0835	1.0	3.5	10.5	10.6	10.45	11.3(12.8)	0.6	16.0
M10	RH-KB-UK-1040	1.0	4.0	12.8	12.8	12.65*	13.8	0.65	20.0

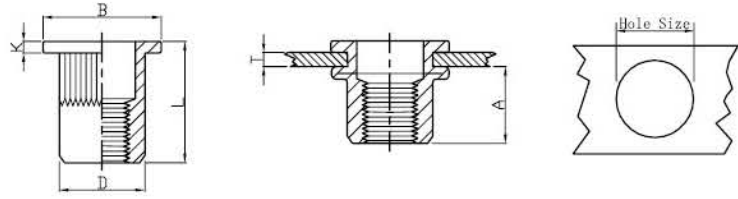
Stainless Steel Flat Head Round Body Plain Closed End



UNIT : mm

螺纹 Thread	编号 P/N	T(GRIP RANGE)		A Rer	Hole Size $+0.1$ 0	D $+0.07$ -0.1	B	K	L
		Min	Max						
M4	FH-RBC/SS-0420	0.5	2.0	11.3	6.0	5.9	9.0	0.8	16.0
M5	FH-RBC/SS-0525	0.5	2.5	13.8	7.0	6.9	10.0	1.0	19.0
M6	FH-RBC/SS-0630	0.5	3.0	15.0	9.0	8.9	12.3	1.3	21.0
M8	FH-RBC/SS-0835	1.0	3.5	18.2	11.0	10.9	15.5	1.5	25.0
M10	FH-RBC/SS-1040	1.0	4.0	19.4	13.0	12.9	17.0	1.6	27.0

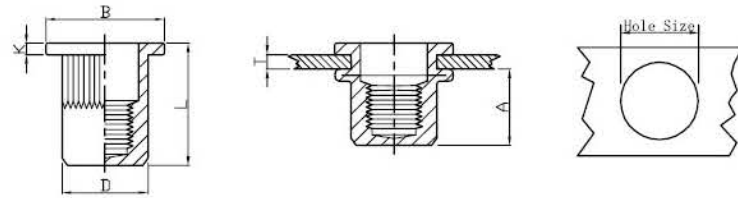
Stainless Steel Flat Head Knurled Body



UNIT : mm

螺纹 Thread	编号 P/N	T(GRIP RANGE) Min Max	A Rer	Hole Size $+0.1$ 0	D $+0.07$ -0.1	B	K	L
M3	FH-KB/SS-0315	0.5-1.5	5.0	5.0	4.9	8.0	0.8	9.0
M4	FH-KB/SS-0420 FH-KB/SS-0440	0.5-2.0 2.0-4.0	6.5	6.0 8.0	5.9	9.0	0.8	10.5 12.0
M5	FH-KB/SS-0525 FH-KB/SS-0540	0.5-2.5 2.0-4.0	8.0 8.5	7.0	6.9	10.0	1.0	13.0 15.0
M6	FH-KB/SS-0630 FH-KB/SS-0650	0.5-3.0 3.0-5.0	9.2 10.5	9.0	8.9	12.3(13.0)	1.3	15.0(15.5) 19.5
M8	FH-KB/SS-0835 FH-KB/SS-0855	1.0-3.5 3.5-5.5	11.5	11.0	10.9	14.5(16.0)	1.5	18.5 21.5
M10	FH-KB/SS-1040 FH-KB/SS-1060	1.0-4.0 4.0-6.0	13.5	13.0	12.9	17.0	1.6 1.7	21.0 24.0
M12	FH-KB/SS-1240 FH-KB/SS-1260	1.0-4.0 4.0-6.0	15.0 16.0	16.0	15.9	23.0	2.0	25.0 28.0

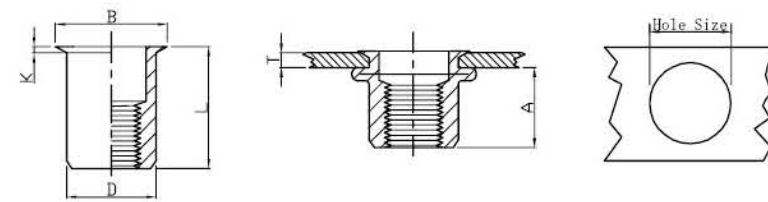
Stainless Steel Flat Head Knurled Body Closed End



UNIT : mm

螺纹 Thread	编号 P/N	T(GRIP RANGE) Min Max	A Rer	Hole Size $+0.1$ 0	D $+0.07$ -0.1	B	K	L
M3	FH-KBC/SS-0315	0.5-1.5	8.0	6.0	5.9	8.0	0.8	13.0
M4	FH-KBC/SS-0420 FH-KBC/SS-0440	0.5-2.0 2.0-4.0	11.8	6.0	5.9	9.0	0.8	16.0 18.0
M5	FH-KBC/SS-0525 FH-KBC/SS-0540	0.5-2.5 2.0-4.0	12.0	7.0	6.9	10.0	1.0	17.0 19.0
M6	FH-KBC/SS-0630 FH-KBC/SS-0650	0.5-3.0 3.0-5.0	12.7	9.0	8.9	12.3	1.3	19.2 21.0
M8	FH-KBC/SS-0835 FH-KBC/SS-0855	1.0-3.5 3.5-5.5	14.2 14.8	11.0	10.9	14.5(15.0)	1.5	21.5 24.0
M10	FH-KBC/SS-1040 FH-KBC/SS-1060	1.0-4.0 4.0-6.0	18.0 19.2	13.0	12.9	17.0	1.6 1.7	27.0 30.0
M12	FH-KBC/SS-1240 FH-KBC/SS-1260	1.0-4.0 4.0-6.0	29.5	16.0	15.9	23.0	1.8 2.0	30.0 33.0

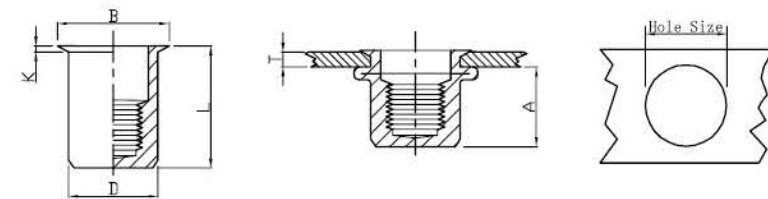
Stainless Steel Reduce Head Round Body Plain



UNIT : mm

螺纹 Thread	编号 P/N	T(GRIP RANGE) Min Max	A Rer	Hole Size $+0.1$ 0	D $+0.07$ -0.1	B	K	L
M4	RH-RB/SS-0420	0.5-2.0	6.5	6.0	5.9	7.0	0.5	10.5
M5	RH-RB/SS-0520	0.5-2.0	7.0	7.0	6.9	8.0	0.5	11.5
M6	RH-RB/SS-0625	0.5-2.5	8.5	9.0	8.9	10.0	0.6	14.0
M8	RH-RB/SS-0830	0.5-3.0	10.5	11.0	10.9	12.0	0.65	16.5
M10	RH-RB/SS-1035	1.0-3.0	11.5	13.0	12.9	14.0	0.7	17.7

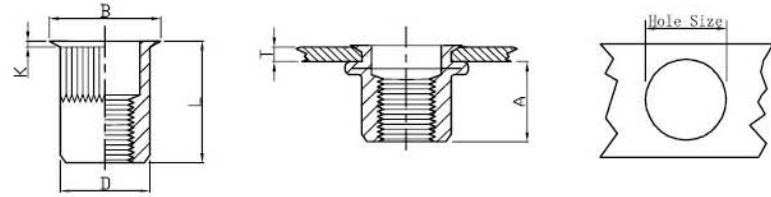
Stainless Steel Reduce Head Round Body Plain Closed End



UNIT : mm

螺纹 Thread	编号 P/N	T(GRIP RANGE) Min Max	A Rer	Hole Size $+0.1$ 0	D $+0.07$ -0.1	B	K	L
M4	RH-RBC/SS-0420	0.5-2.0	11.0	6.0	5.9	7.0	0.5	15.0
M5	RH-RBC/SS-0520	0.5-2.0	12.5	7.0	6.9	8.0	0.5	16.5
M6	RH-RBC/SS-0625	0.5-2.5	15.5	9.0	8.9	10.0	0.6	20.5
M8	RH-RBC/SS-0830	0.5-3.0	17.6	11.0	10.9	12.0	0.65	23.0
M10	RH-RBC/SS-1035	1.0-3.5	18.3	13.0	12.9	14.0	0.7	24.5

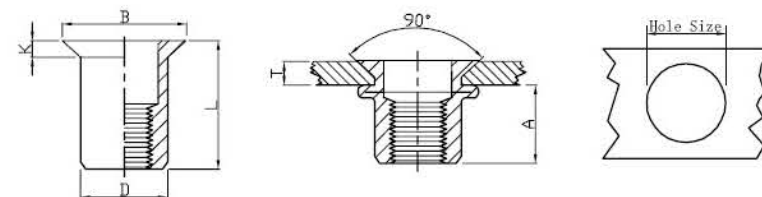
Stainless Steel Reduce Head Knurled Body



UNIT : mm

螺纹 Thread	编号 P/N	T(GRIP RANGE)		A Rer	Hole Size $+0.1$ 0	D $+0.07$ -0.1	B	K	L
		Min	Max						
M3	RH-KB/SS-0315	0.5-1.5		5.0	5.0	4.9	6.0	0.5	9.0
	RH-KB/SS-0325	1.5-2.5		6.2					11.5
M4	RH-KB/SS-0420	0.5-2.0		6.5	6.0	5.9	7.0	0.5	10.5
	RH-KB/SS-0440	2.0-4.0		7.0					13.0
M5	RH-KB/SS-0520	0.5-2.0		7.2	7.0	6.9	8.0	0.5	11.5
	RH-KB/SS-0540	2.0-4.0		7.2					13.0
M6	RH-KB/SS-0625	0.5-2.5		8.7	9.0	8.9	10.0	0.6	14.0
	RH-KB/SS-0650	2.5-5.0		8.7					16.0
M8	RH-KB/SS-0830	0.5-3.0		10.5	11.0	10.9	12.0	0.65	16.5
	RH-KB/SS-0850	3.0-5.0		10.5					19.5
M10	RH-KB/SS-1035	1.0-3.5		10.7	13.0	12.9	14.0	0.70	17.7
	RH-KB/SS-1060	3.5-6.0		12.5				0.75	23.0
M12	RH-KB/SS-1240	1.0-4.0		16.2	16.0	15.9	17.6	0.8	24.2
	RH-KB/SS-1260	4.0-6.5		16.2					27.0

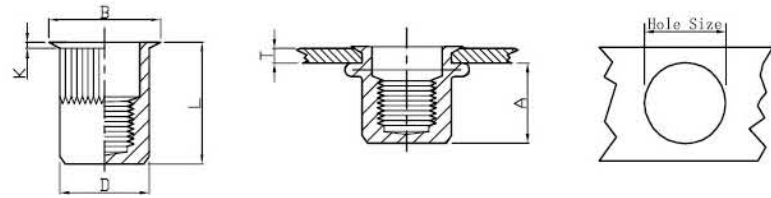
Stainless Steel Countersunk Head Round Body Plain



UNIT : mm

螺纹 Thread	编号 P/N	T(GRIP RANGE)		A Ref	Hole Size $+0.1$ 0	D $+0.07$ -0.1	B	K	L
		Min	Max						
M4	CH-RB/SS-0430	1.5-3.0		7.5	6.0	5.9	9.0	1.5	12.0
M5	CH-RB/SS-0535	1.5-3.5		7.8	7.0	6.9	10.0	1.5	13.0
M6	CH-RB/SS-0640	1.5-4.0		9.0	9.0	8.9	12.0	1.5	15.5
M8	CH-RB/SS-0845	2.0-4.5		12.0	11.0	10.9	14.0	1.5	18.5
M10	CH-RB/SS-1050	2.0-5.0		13.0	13.0	12.9	16.0	1.5	21.0

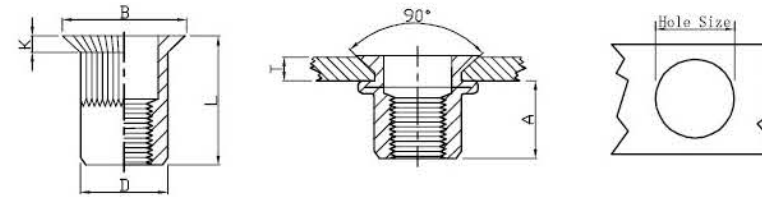
Stainless Steel Reduce Head Knurled Body Closed End



UNIT : mm

螺纹 Thread	编号 P/N	T(GRIP RANGE)		A Rer	Hole Size $+0.1$ 0	D $+0.07$ -0.1	B	K	L
		Min	Max						
M3	RH-KBC/SS-0315	1.5-2.5		8.5	5.0	4.9	6.0	0.5	13.0
M4	RH-KBC/SS-0420	0.5-2.0		11.2	6.0	5.9	7.0	0.5	15.0
	RH-KBC/SS-0440	2.0-4.0		11.2					16.5
M5	RH-KBC/SS-0520	0.5-2.0		11.5	7.0	6.9	8.0	0.5	16.5
	RH-KBC/SS-0540	2.0-4.0		11.5					18.0
M6	RH-KBC/SS-0625	0.5-2.5		15.0	9.0	8.9	10.0	0.6	20.5
	RH-KBC/SS-0645	2.5-4.5		15.0					22.0
M8	RH-KBC/SS-0830	0.5-3.0		17.5	11.0	10.9	12.0	0.65	23.0
	RH-KBC/SS-0850	3.0-5.0		17.5				0.70	24.5
M10	RH-KBC/SS-1035	1.0-3.5		18.0	13.0	12.9	14.0	0.7	24.5
	RH-KBC/SS-1055	3.5-5.5		18.0				0.8	26.0
M12	RH-KBC/SS-1240	1.0-4.0		22.0	16.0	15.9	17.6	1.0	31.5

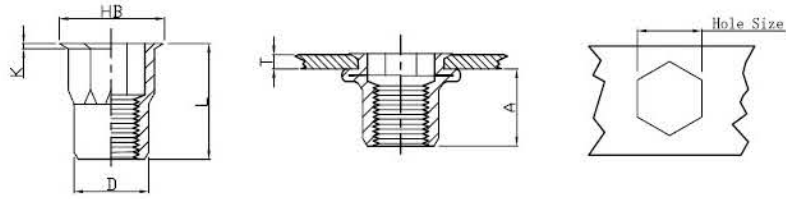
Stainless Steel Countersunk Head Knurled Body



UNIT : mm

螺纹 Thread	编号 P/N	T(GRIP RANGE)		A Ref	Hole Size $+0.1$ 0	D $+0.07$ -0.1	B	K	L
		Min	Max						
M4	CH-KB/SS-0430	1.5-3.0		7.5	6.0	5.9	9.0	1.5	12.0
M5	CH-KB/SS-0535	1.5-3.5		7.8	7.0	6.9	10.0	1.5	13.0
M6	CH-KB/SS-0640	1.5-4.0		9.0	9.0	8.9	12.0	1.5	15.5
M8	CH-KB/SS-0845	2.0-4.5		12.0	11.0	10.9	14.0	1.5	18.5
M10	CH-KB/SS-1050	2.0-5.0		13.0	13.0	12.9	16.0	1.5	21.0
M12	CH-KB/SS-1240	2.0-5.0		17.5	16.0	15.9	18.0	1.7	24.0

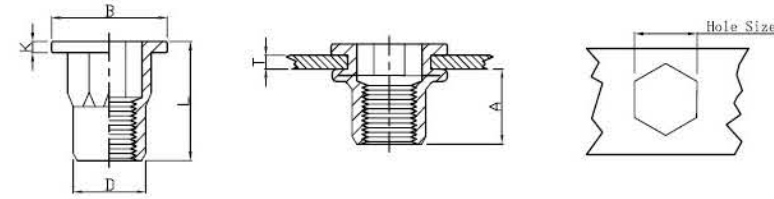
Stainless Steel Reduce Hex Head Inner-Hex Body



UNIT : mm

螺纹 Thread	编号 P/N	T(GRIP RANGE) Min Max	A Rer	Hole Size $+0.1$	D $+0.07$ -0.1	B	K	L
M3	RHH-IHB/SS-0325	0.5-1.5	5.2	5.0	4.9	6.0	0.5	9.0
	RHH-IHB/SS-0325	1.5-2.5	5.5					11.0
M4	RHH-IHB/SS-0420	0.5-2.0	8.0	6.0	5.9	7.0	0.5	12.0
	RHH-IHB/SS-0440	2.0-4.0						14.0
M5	RHH-IHB/SS-0525	0.5-2.5	8.2	7.0	6.9	8.0	0.6	13.0
	RHH-IHB/SS-0540	2.0-4.0					0.5	15.0
M6	RHH-IHB/SS-0630	1.0-3.0	10.7	9.0	8.9	10.0	0.6	16.0
	RHH-IHB/SS-0650	3.5-5.0						18.0
M8	RHH-IHB/SS-0835	1.0-3.5	11.2	11.0	10.9	12.0	0.65	17.5
	RHH-IHB/SS-0850	3.5-5.0					19.5	
M10	RHH-IHB/SS-1040	1.0-4.0	13.5	13.0	12.9	14.5	0.75	21.0
	RHH-IHB/SS-1050	3.5-5.0					23.0	
M12	RHH-IHB/SS-1240	1.0-4.0	14.8	16.0	15.9	17.5	0.8	24.0
	RHH-IHB/SS-1260	4.0-6.0					27.0	

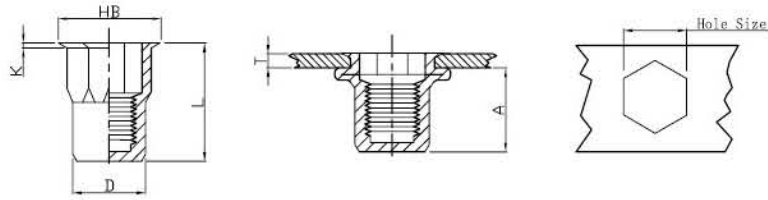
Stainless Steel Flat Head Inner-Hex Body



UNIT : mm

螺纹 Thread	编号 P/N	T(GRIP RANGE) Min Max	A Rer	Hole Size $+0.1$ 0	D $+0.07$ -0.1	B	K	L
M3	FH-IHB/SS-0420	0.5-1.5	5.0	5.0	4.9	8.0	0.8	9.0
M4	FH-IHB/SS-0420	0.5-2.0	7.2	6.0	5.9	9.0	0.8	11.0
M5	FH-IHB/SS-0525	0.5-2.5	7.5	7.0	6.9	10.0	1.0	12.0
M6	FH-IHB/SS-0630	0.5-3.0	9.2	9.0	8.9	12.7	1.3	15.5
M8	FH-IHB/SS-0835	1.0-3.5	11.0	11.0	10.9	16.0	1.5	18.0
M10	FH-IHB/SS-1040	1.0-4.0	13.2	13.0	12.9	18.0	1.7	21.0
M12	FH-IHB/SS-1240	1.0-4.0	16.0	16.0	15.9	23.0	2.0	28.0

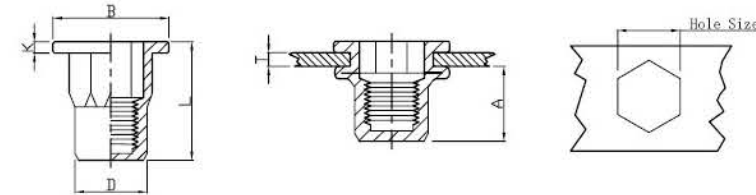
Stainless Steel Reduce Hex Head Inner-Hex Body Closed End



UNIT : mm

螺纹 Thread	编号 P/N	T(GRIP RANGE) Min Max	A Rer	Hole Size $+0.1$	D $+0.07$ -0.1	B	K	L
M3	RHH-IHBC/SS-0315	0.5-1.5	8.5	5.0	4.9	6.0	0.5	13.0
	RHH-IHBC/SS-0320	1.5-2.5						15.0
M4	RHH-IHBC/SS-0420	0.5-2.0	11.5	6.0	5.9	7.0	0.5	15.5
	RHH-IHBC/SS-0440	2.0-4.0						17.5
M5	RHH-IHBC/SS-0525	0.5-2.5	13.5	7.0	6.9	8.0	0.5	18.0
	RHH-IHBC/SS-0540	2.0-4.0						20.0
M6	RHH-IHBC/SS-0630	0.5-3.5	15.8	9.0	8.9	10.0	0.6	21.5
	RHH-IHBC/SS-0650	3.5-5.0						23.0
M8	RHH-IHBC/SS-0835	1.0-3.5	18.2	11.0	10.9	12.0	0.65	24.0
	RHH-IHBC/SS-0850	3.5-5.0					26.0	
M10	RHH-IHBC/SS-1040	1.0-4.0	23.2	13.0	12.9	14.5	0.75	30.5
	RHH-IHBC/SS-1050	3.5-5.0					33.0	
M12	RHH-IHBC/SS-1240	1.0-4.0	23.2	16.0	15.9	17.5	0.75	3.1

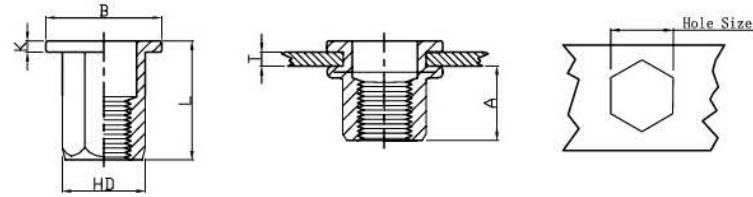
Stainless Steel Flat Head Inner-Hex Body Closed End



UNIT : mm

螺纹 Thread	编号 P/N	T(GRIP RANGE) Min Max	A Rer	Hole Size $+0.1$ 0	D $+0.07$ -0.1	B	K	L
M4	FH-IHBC/SS-0420	0.5-2.0	11.5	6.0	5.9	9.0	1.0	16.0
M5	FH-IHBC/SS-0525	0.5-2.5	13.5	7.0	6.9	10.0	1.0	18.5
M6	FH-IHBC/SS-0630	0.5-3.0	17.0	9.0	8.9	12.7	1.5	23.0
M8	FH-IHBC/SS-0835	1.0-3.5	18.2	11.0	10.9	16.0	1.5	25.0
M10	FH-IHBC/SS-1040	1.0-4.0	25.0	13.0	12.9	19.0	1.7	33.0
M12	FH-IHBC/SS-1240	1.0-4.0	25.0	16.0	15.9	23.0	2.0	33.5
	FH-IHBC/SS-1260	3.0-6.0						35.5

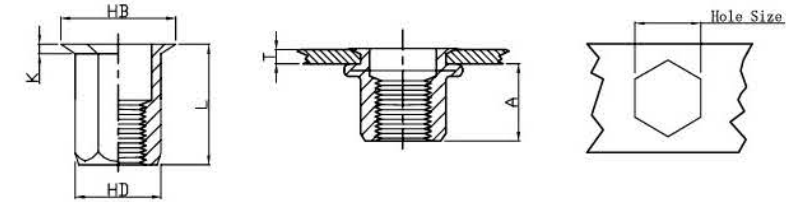
Stainless Steel Flat Head Full Hex Body



UNIT : mm

螺纹 Thread	编号 P/N	T(GRIP RANGE)		A Rer	Hole Size $+0.1$ 0	D $+0.07$ -0.1	B	K	L
		Min	Max						
M3	FH-FHB/SS-0325	0.5	1.5	5.5	5.0	4.9	7.5	0.8	8.5
M4	FH-FHB/SS-0420	0.5	2.0	6.5	6.0	5.9	9.0	0.8	11.0
M5	FH-FHB/SS-0525	0.5	2.5	8.0	7.0	6.9	10.0	1.0	14.0
M6	FH-FHB/SS-0630	0.5	3.0	8.5	9.0	8.9	12.7(*13.0)	1.35	15.0(*16.0)
M8	FH-FHB/SS-0835	1.0	3.5	10.5	11.0	10.9	16.0	1.5	18.0
M10	FH-FHB/SS-1035	1.0	3.5	12.5	13.0	12.9	18.0(*19.0)	1.7	21.0(*23.0)
M10	FH-FHB/SS-1035(12H)	1.0	3.5	13.5	12.0	11.9	18.0	1.7	21.0
M12	FH-FHB/SS-1240(15H)	1.0	4.0	14.0	15.0	14.9	20.0	1.7	23.0
M12	FH-FHB/SS-1250(16H)	2.0	5.0	16.5	16.0	15.9	23.0	2.0	27.0

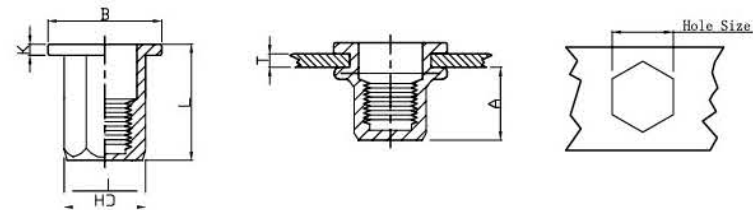
Stainless Steel Reduce Head Full Hex Body



UNIT : mm

螺纹 Thread	编号 P/N	T(GRIP RANGE)		A Rer	Hole Size $+0.1$ 0	D $+0.07$ -0.1	B	K	L
		Min	Max						
M3	RHH-FHB/SS-0325	0.5	1.5	5.0	5.0	4.9	6.0	0.5	8.5
M4	RHH-FHB/SS-0425	0.5	2.5	6.7	6.0	5.9	7.0	0.5	11.0
M5	RHH-FHB/SS-0530	0.5	3.0	9.0	7.0	6.9	8.0	0.5	14.5
M6	RHH-FHB/SS-0635	1.0	3.5	10.0	9.0	8.9	10.0	0.6	16.0
M8	RHH-FHB/SS-0840	1.0	4.0	11.5	11.0	10.9	12.0	0.65	18.0
M10	RHH-FHB/SS-1035	1.0	3.5	12.5	12.0	11.9	13.5	0.75	19.0
M12	RHH-FHB/SS-1240	1.0	4.0	15.5	16.0	15.9	17.5	1.0	25.0

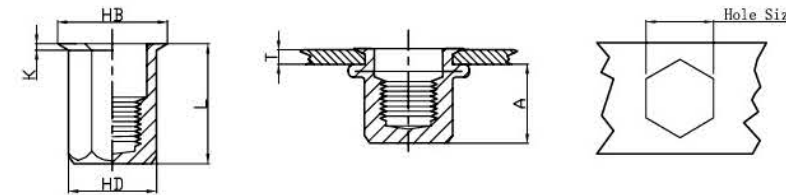
Stainless Steel Flat Head Full Hex Body Closed End



UNIT : mm

螺纹 Thread	编号 P/N	T(GRIP RANGE)		A Rer	Hole Size $+0.1$ 0	D $+0.07$ -0.1	B	K	L
		Min	Max						
M4	FH-FHBC/SS-0420	0.5	2.0	11.0	6.0	5.9	9.0	1.0	15.0
M5	FH-FHBC/SS-0525	0.5	2.5	13.5	7.0	6.9	10.0	1.0	18.0
M6	FH-FHBC/SS-0630	0.5	3.0	17.0	9.0	8.9	12.7	1.5	23.0
M8	FH-FHBC/SS-0835	1.0	3.5	19.0	11.0	10.9	16.0	1.5	26.0
M10	FH-FHBC/SS-1040	1.0	4.0	25.0	13.0	12.9	19.0	2.0	33.0

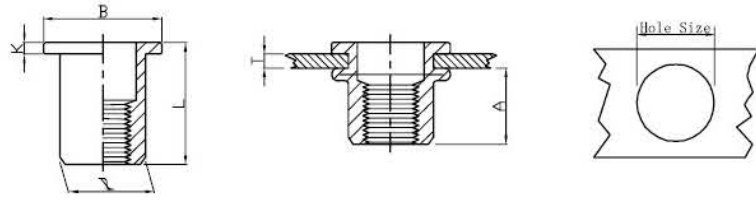
Stainless Steel Reduce Head Full Hex Body Closed End



UNIT : mm

螺纹 Thread	编号 P/N	T(GRIP RANGE)		A Rer	Hole Size $+0.1$ 0	D $+0.07$ -0.1	B	K	L
		Min	Max						
M4	RHH-FHBC/SS-0425	0.5	2.5	12.3	6.0	5.9	7.0	0.5	16.0
M5	RHH-FHBC/SS-0530	0.5	3.0	15.2	7.0	6.9	8.0	0.5	20.0
M6	RHH-FHBC/SS-0635	0.5	3.5	14.5	9.0	8.9	10.0	0.6	20.5
M8	RHH-FHBC/SS-0840	1.0	4.0	17.0	11.0	10.9	12.0	0.65	23.0
M10	RHH-FHBC/SS-1045	1.0	4.5	20.0	13.0	12.9	14.5	0.75	28.5

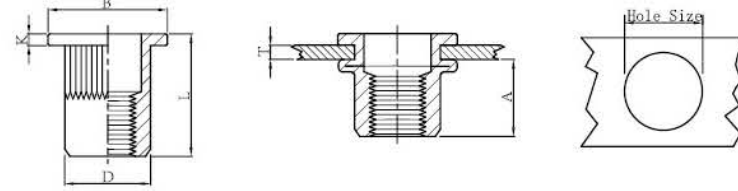
Aluminum Flat Head Round Body Plain



UNIT : mm

螺纹 Thread	编号 P/N	T(GRIP RANGE) Min Max	A Ref	Hole Size $+0.1$ 0	D $+0.07$ -0.1	B	K	L
M4	FH-RB/AL-0420	0.5-2.0	6.0	6.0	5.9	8.8*	0.8*	10.5*
M5	FH-RB/AL-0525	0.5-2.5	7.5	7.0	6.9	10.0	1.0	13.0
M6	FH-RB/AL-0625	0.5-2.5	9.2	9.0	8.9	12.3	1.5	15.0
M8	FH-RB/AL-0830	1.0-3.0	10.2	11.0	10.9	14.3	1.5	16.5
M10	FH-RB/AL-1040	1.0-4.0	11.5	13.0	12.9	16.3	1.6	19.0

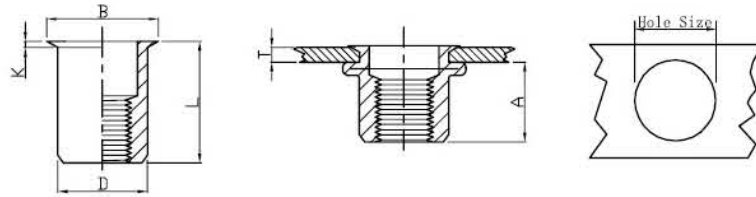
Aluminum Flat Head Knurled Body



UNIT : mm

螺纹 Thread	编号 P/N	T(GRIP RANGE) Min Max	A Ref	Hole Size $+0.1$ 0	D	B	K	L
M3	FH-KB/AL-0315	0.5-1.5	5.0	5.0	4.9	8.0	0.8	9.0
M4	FH-KB/AL-0420	0.5-2.0	6.0	6.0	5.9	8.8*	0.8*	10.5*
M5	FH-KB/AL-0525	0.5-2.5	7.5	7.0	6.9	10.0	1.0	13.0
M6	FH-KB/AL-0625	0.5-2.5	9.2	9.0	8.9	12.3	1.5	15.0
M8	FH-KB/AL-0830	1.0-3.0	10.2	11.0	10.9	14.3	1.5	16.5
M10	FH-KB/AL-1040	1.0-4.0	11.5	13.0	12.9	16.3	1.6	19.0

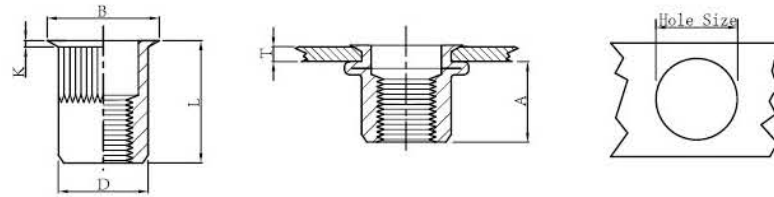
Aluminum Reduce Head Round Body Plain



UNIT : mm

螺纹 Thread	编号 P/N	T(GRIP RANGE) Min Max	A Ref	Hole Size $+0.1$ 0	D $+0.07$ -0.1	B	K	L
M4	RH-RB/AL-0420	0.5-2.0	6.0	6.0	5.9	7.0	0.5	10.5
M5	RH-RB/AL-0520	0.5-2.0	7.5	7.0	6.9	8.0	0.5	11.5
M6	RH-RB/AL-0625	0.5-2.5	9.2	9.0	8.9	10.0	0.6*	14.0*
M8	RH-RB/AL-0825	0.5-2.5	10.2	11.0	10.9	12.0	0.65*	15.5*
M10	RH-RB/AL-1030	1.0-3.0	11.5	13.0	12.9	14.1	0.7*	17.7*

Aluminum Reduce Head Knurled Body



UNIT : mm

螺纹 Thread	编号 P/N	T(GRIP RANGE) Min Max	A Ref	Hole Size $+0.1$ 0	D $+0.07$ -0.1	B	K	L
M3	RH-KB/AL-0320	0.5-1.5	5.0	5.0	4.9	6.0	0.5	9.0
M4	RH-KB/AL-0420	0.5-2.0	6.0	6.0	5.9	7.0	0.5	10.5
M5	RH-KB/AL-0520	0.5-2.0	7.5	7.0	6.9	8.0	0.5	11.5
M6	RH-KB/AL-0625	0.5-2.5	9.2	9.0	8.9	10.0	0.6*	14.0*
M8	RH-KB/AL-0825	0.5-2.5	10.2	11.0	10.9	12.0	0.65*	15.5*
M10	RH-KB/AL-1030	1.0-3.0	11.5	13.0	12.9	14.1	0.7*	17.7*